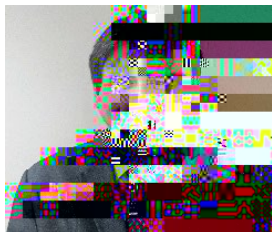




CONTENTS



MESSAGE FROM THE EXECUTIVE DEAN



Hello everyone,

A very warm welcome to all of our new students, domestic and international and to our returning learners at different stages in their courses. I hope you, and your family and friends have all remained safe and well.

As the pandemic subsides life is slowly returning to normal, and it has been fantastic to see our campuses starting to come back to life as students return. Covid has not gone away of course so please be mindful of the need to take basic hygiene precautions while out and about. While mask wearing is no longer mandatory in most situations, everyone is free to continue wearing one if they wish to out of individual choice.

Many of you will now be studying on a permanently blended programme where part of your time is on campus and part of your time is spent live online. Please remember that both elements of the programme are of equal importance to you so it is really important that you engage fully with all of your learning opportunities. Also please remember that we take attendance both online and face to face

As the pandemic falls away the UKVI rules around international students and compliance are changing back to the pre-pandemic position where all learning and teaching needs to be face-to-face on campus. By the end of June, the ability to study part of your programme online will have ceased if you are an international student on a Tier 4 visa.

With the campus now open it is possible to access support services (Student Services, Library, Student Finance and Welfare) face to face if required. It is also possible for you to continue to access these services online if this is more convenient for you.

Engaging with your study in terms of attending classes, taking an active role in sessions, submitting formative assessments are all activities that will help you to do well on your degree programme. If you sit back and don't attend or engage and fail to submit formative assessments all of our evidence shows that this will increase your chances of not being successful. So, I would urge you to engage as much as you can to get the most you can from learning opportunities and to empower yourself to do the best you can.

Enjoy being back on campus, making and meeting friends as well as interacting face to face with your tutors.







Please refer to the 'how to' guide which includes contact details if you are experiencing any difficulties joining your sessions.



LEARNING AND TEACHING

For those on a blended learning programme, we will be using two systems to deliver your live online learning:



Access to your VLE (Moodle or Blackboard depending on your university) is really important as all of the materials you will need are stored there. A lot of what we do online will also be recorded and put on your VLE so you can go back and refer to it in future.

If you are having problems accessing your VLE, in the first instance please contact the





If you are unable to submit an upcoming assessment, please complete and submit a Mitigating/Extenuating Circumstances application using the below information prior to the submission deadline.

Middlesex University	Online application form	Submit via MyUnihub
Solent University	Application form	Email to: qahe.solentextenuatingcircumstances@qa.com
Ulster University	Application form	Email to: uuacademicenquiries@qa.com
University of Roehampton	Application form	Email to: QAHE.uormitigatingcircumstances@qa.com
London Metropolitan University	Application form	Email to:



If you are in receipt of Disabled Student's Allowance and have study skills support or mentoring, it is important that you contact your provider to discuss this support. You can find details of your provider in your DSA 2 letter.

You can also contact your Needs Assessor to discuss-1.188 (h)6.248 6 () 47nTj.878 e(d)1.347 ((s)9447MCITJ-

.21 (a)-1tEQ 0





General information and advice for international students can also be found on the UKCISA website



x

myqahe.qabusinessschool.com.

x

www.ukcisa.org.uk/

x

student.londonmet.ac.uk/it-resources/it-help-and-support/

x

unihub.mdx.ac.uk/support/unihelp

x

leT rg/3.st